

FLORIDA DINING SIDE CHAIR

SKU #: 816

Description: Dining side chair with durable, weather-resistant, injection moulded, polypropylene reinforced with glass fiber frame, non-metallic frame will never unravel, rust or decay, UV protected, with nylon foot glides, for indoor/outdoor use, stackable

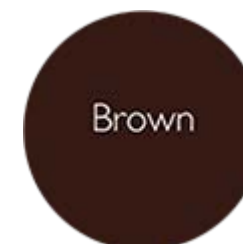
Colors: White, brown or dark grey

Dimensions: 17 3/4"W x 20 1/2"D x 34 1/4"H x 17 3/4"SH

Weight: 9 pounds



White



Brown



Dark
Grey